



**5 KVA to 3000 KVA**  
HIGH POWER DIESEL GENERATOR  
POWER LINE-LG Series



*EMERGENCY POWER by LEEGA Generator set*





**POWER LINE-LG Series** Hipower diesel generator sets and low-voltage switchgear assemblies and full range of services including the unit installation, full-automatic distribution, generator room environmental engineering, unit maintenance, spare parts supply, etc. The units produced by KEPBER by LEEGA all use international brand engines and generators with excellent quality. Through ten years of product development and technology accumulation, Lega's products gradually become more mature. In order to meet the different needs of customers worldwide, we will renovate continuously technologies and improve products.

The new POWER LINE-LG Series generators offer total, reliable and continuous power with a higher load factor as well as competitive fuel consumption rates. Incorporating KEPBER by LEEGA innovative technology, the POWER LINE-LG Series range enables a seamless integration that allows versatile system configurations for optimal performance. Today, KEPBER by LEEGA provides integrated solutions to streamline the specifying process. Our industrial generators are diesel-fueled models- ranging from 5 kVA to 3,300 kVA @ 50 Hz (11 kW to 3200 kW @ 60 Hz) complete with electronic controls and automatic transfer switches. To help cater to unique installation environments, we also offer a range of accessories, including controls, silencers, enclosures, fuel tanks and block heaters.

### Factory Test

Each our generating sets must be got through 1 hour load test for running 0%, 25%, 50%,75%, 100% and 110% load before dispatch, All protective devices, control functions are simulated and it's system checked, proved and then passed for dispatch. A test certificate can be provided upon request.

### Quality Standards

Our diesel generating sets meets the following standards:  
GB/T2820, GB1105, YD/T502, ISO3046, ISO8525, ISO8525-3-5-6

### Factory Standards

ISO 9001:2000



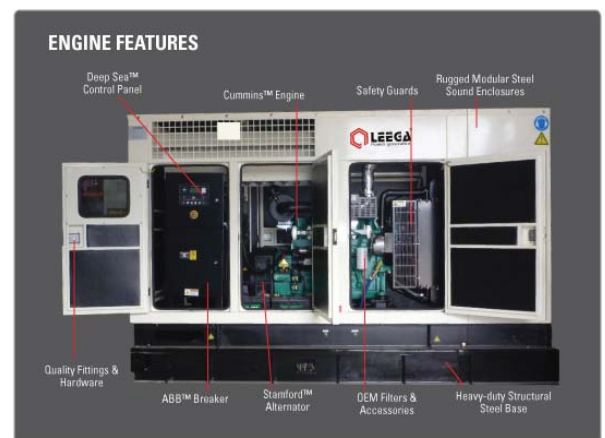
Container type



Open type



Silent type





### Prime power rating

These ratings are applicable for supplying continuous electrical power (at variable load) in lieu of commercially purchased power. There is no limitation to the annual hours of operation and this model can supply 10% overload power for 1 hour in 12 hours.

### Standby power rating

These ratings are applicable for supplying continuous electrical power( at variable load) in the event of a utility power failure. No overload is permitted on these ratings. The alternator on this model is peak continuous rated (as defined in ISO8528-3) at 27 °C

## DIESEL GENERATOR / POWER LINE-LG Series

	LG44C5-2	LG80C	LG110C5	LG165C5
<b>UNIT INFORMATION</b>				
Power rating/PRIME(1)	32KW(40KVA)	58KW(73KVA)	80KW(100KVA)	120KW(150KVA)
Power rating/STANDBY(2)	35KW(44KVA)	64KW(80KVA)	88KW(110KVA)	150KW(165KVA)
Power factor	0.8	0.8	0.8	0.8
Voltage available	380/220v,400/230v,415/240v	380/220v,400/230v,415/240v	380/220v,400/230v,415/240v	380/220v,400/230v,415/240v
Motor	Cummins 4BT3.9G2	Cummins 4BT3.9G11	Cummins 6BT5.9G2	Cummins 6BTAA5.9-G12
Alternator	LEEGA LA234	Stamford UCI224F	Stamford UCI274C	Stamford UCI274F
Speed Control type	Electronically	Electronically	Electronically	Electronically
Phase	Three	Three	Three	Three
Fuel Tank Capacity(Silent Type)	180L	260L	260L	280L
Fuel Tank Capacity(Open Type)	150L	230L	230L	250L
System Voltage	24V	24V	24V	24V
Frequency	50HZ	50HZ	50HZ	50HZ
Engine coolant flow	1.6L/min	2.0L/min	2.0L/min	3L/min
Air intake flow	108L/sec	110L/sec	110L/sec	150L/sec
Exhaust air flow	360L/sec	395L/sec	395L/sec	375L/sec
Exhaust Temperature	487 °C	580 °C	580 °C	507 °C
<b>ENGINE</b>				
Maximum output(kw)	40KW(50Hz)	80KW(50Hz)	106KW(50Hz)	155KW(50Hz)
Number of Cylinders	4	4	6	6
Aspiration	Turbocharged & Charge Air Cooled	Turbocharged & Charge Air Cooled	Turbocharged & Charge Air Cooled	Turbocharged & Charge Air Cooled
Cycle	4	4	4	4
Fuel Type	Diesel	Diesel	Diesel	Diesel
Combustion Type	Direct Injection	Direct Injection	Direct Injection	Direct Injection
Cooling Type	Water cooled	Water cooled	Water cooled	Water cooled
Bore	102mm	102mm	102mm	102mm
Stroke	102mm	102mm	102mm	120mm
Displacement	5.9 L	5.9 L	5.9 L	5.9 L
Compression Ratio	17.3:1	17.3:1	17.3:1	17.3:1
Lubrication Capacity	9.5 liter	10.9 liter	14.2 liter	16.4 liter
Coolant Capacity	7.2 liter	8.3 liter	7.9 liter	10 liter
<b>ALTERNATOR</b>				
Insulation	Clase"H"	Clase"H"	Clase"H"	Clase"H"
Excitation Type	Self-excitation or PMG	Self-excitation or PMG	Self-excitation or PMG	Self-excitation or PMG
Protection class	IP23	IP23	IP23	IP23
<b>FUEL CONSUMPTION</b>				
<b>@1500/1800 RPM</b>				
Standby Power(2)(L/hr)	11.1/12.5	20	26.9/33.6	38
Prime Power(1) (L/hr)	10/11.5	17.6	33.6/29.7	34
75% Prime Power(1)(L/hr)	7.9/9.4	13.2	18.2/22.2	26
50% Prime Power(1)(L/hr)	5.9/7.4	9.1	12.5/15.6	17
<b>DIMENSION(Open/Silent)</b>				
Length (mm.)	1750/2450	1870/2670	2200/2900	2320/3200
Width (mm.)	970/1080	950/1080	1030/1080	1030/1080
Height (mm.)	1530/1770	1500/1765	1580/1970	1580/1970
<b>UNIT WEIGHT(Open/Silent)</b>				
Net Weight (KG)	1100/1400	990/1490	1250/1780	1500/1930
<b>All of Unit /Certificates</b>				
Engine	ISO 3046,BS 5514,DIN 6271			
Alternator	UTE NFC 51-111-105-110 ICE34-1,BS 5000-4999 NEMA MG 21,VDE 0530			
Generator Set	ISO 8528			

### Remark

- (1)Prime Power: ratings are as per DIN 6271,BS55114 and ISO-3046 with 10% overload capacity
- (2)Standby Power: Power available at variable load for up to a max. of 500 hours during one year of which 300 hours may be for continuous use.
- (3)Operation at Altitude ≤1500m, Ambient temperature ≤ 40 °C.If altitude higher than 1500m, each 100m will cause additional de-rating 1%.
- (4)Equipment can be changed or upgarded without notice.





### Prime power rating

These ratings are applicable for supplying continuous electrical power (at variable load) in lieu of commercially purchased power. There is no limitation to the annual hours of operation and this model can supply 10% overload power for 1 hour in 12 hours.

### Standby power rating

These ratings are applicable for supplying continuous electrical power (at variable load) in the event of a utility power failure. No overload is permitted on these ratings. The alternator on this model is peak continuous rated (as defined in ISO8528-3) at 27 °C

## DIESEL GENERATOR / POWER LINE-LG Series

	LG175C5	LG220C	LG275C	LG313C
<b>UNIT INFORMATION</b>				
Power rating/PRIME(1)	128KW(160KVA)	160KW(200KVA)	200KW(250KVA)	220KW(275KVA)
Power rating/STANDBY(2)	140KW(175KVA)	176KW(220KVA)	220KW(275KVA)	250KW(313KVA)
Power factor	0.8	0.8	0.8	0.8
Voltage available	380/220v,400/230v,415/240v	380/220v,400/230v,415/240v	380/220v,400/230v,415/240v	380/220v,400/230v,415/240v
Motor	Cummins 6CTA8.3G2	Cummins 6CTA8.3G2	Cummins 6LTAA8.9G3	Cummins NTA855G1A
Alternator	Stamford UCI274F	Stamford UCI274F	Stamford UCDI274K	Stamford HCI444D
Speed Control type	Electronically	Electronically	Electronically	Electronically
Phase	Three	Three	Three	Three
Fuel Tank Capacity(Silent Type)	330L	330L	370L	500L
Fuel Tank Capacity(Open Type)	300L	300L	320L	450L
System Voltage	24V	24V	24V	24V
Frequency	50HZ	50HZ	50HZ	50HZ
Engine coolant flow	3.3L/min	3.3L/min	3.3L/min	5L/min
Air intake flow	206L/sec	191L/sec	254L/sec	379L/sec
Exhaust air flow	578L/sec	547L/sec	634L/sec	936L/sec
Exhaust Temperature	550°C	580°C	470°C	498°C
<b>ENGINE</b>				
Maximum output(kw)	180KW(50HZ)	203KW(50HZ)	250KW(50HZ)	291KW(50HZ)
Number of Cylinders	6	6	6	6
Aspiration	Turbocharged & Charge Air Cooled	Turbocharged & Charge Air Cooled	Turbocharged & Charge Air Cooled	Turbocharged & Charge Air Cooled
Cycle	4	4	4	4
Fuel Type	Diesel	Diesel	Diesel	Diesel
Combustion Type	Direct Injection	Direct Injection	Direct Injection	Direct Injection
Cooling Type	Water cooled	Water cooled	Water cooled	Water cooled
Bore	114mm	114mm	114mm	140mm
Stroke	135mm	135mm	145mm	152mm
Displacement	8.3 L	8.3 L	8.9 L	14 L
Compression Ratio	17.3:1	17.3:1	16.6:1	13.9:1
Lubrication Capacity	27.6 liter	27.6 liter	27.6 liter	36 liter
Coolant Capacity	12.3 liter	12.3 liter	11.1 liter	20.8 liter
<b>ALTERNATOR</b>				
Insulation	Clase"H"	Clase"H"	Clase"H"	Clase"H"
Excitation Type	Self-excitation or PMG	Self-excitation or PMG	Self-excitation or PMG	Self-excitation or PMG
Protection class	IP23	IP23	IP23	IP23
<b>FUEL CONSUMPTION</b>				
<b>@1500/1800 RPM</b>				
Standby Power(2)(L/hr)	48/49	51/56	59/70	68.3
Prime Power(1)(L/hr)	42/44	45/49	54/62	61.3
75% Prime Power(1)(L/hr)	31/33	34/37	41/46	46.1
50% Prime Power(1)(L/hr)	21/23	23/25	30/31	31.4
<b>DIMENSION(Open/Silent)</b>				
Length (mm.)	2300/3500	2520/3600	2570/3700	3050/4350
Width (mm.)	950/1080	980/1090	1140/1090	1200/1400
Height (mm.)	1690/2120	1760/2100	1680/2000	1760/4020
<b>UNIT WEIGHT(Open/Silent)</b>				
Net Weight (KG)	1650/2080	1800/2520	1980/3450	3050/4020
<b>All of Unit /Certificates</b>				
Engine	ISO 3046,BS 5514,DIN 6271			
Alternator	UTE NFC 51-111-105-110 ICE34-1,BS 5000-4999 NEMA MG 21,VDE 0530			
Generator Set	ISO 8528			

(1)Prime Power: ratings are as per DIN 6271,BS55114 and ISO-3046 with 10% overload capacity

(2)Standby Power: Power available at variable load for up to a max. of 500 hours during one year of which 300 hours may be for continuous use.

(3)Operation at Altitude ≤1500m, Ambient temperature ≤ 40°C).If altitude higher than 1500m, each 100m will cause additional de-rating 1%.

(4)Equipment can be changed or upgraded without notice.



### Prime power rating

These ratings are applicable for supplying continuous electrical power (at variable load) in lieu of commercially purchased power. There is no limitation to the annual hours of operation and this model can supply 10% overload power for 1 hour in 12 hours.

### Standby power rating

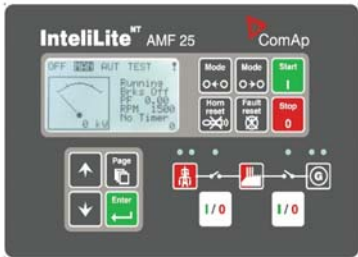
These ratings are applicable for supplying continuous electrical power( at variable load) in the event of a utility power failure. No overload is permitted on these ratings. The alternator on this model is peak continuous rated (as defined in ISO8528-3) at 27 °C

## DIESEL GENERATOR / POWER LINE-LG Series

	LG350C5	LG388C	LG440C5	LG550C5
<b>UNIT INFORMATION</b>				
Power rating/PRIME(1)	250KW(313KVA)	280KW(350KVA)	320KW(400KVA)	400KW(500KVA)
Power rating/STANDBY(2)	280KW(350KVA)	310KW(388KVA)	352KW(440KVA)	440KW(550KVA)
Power factor	0.8	0.8	0.8	0.8
Voltage available	380/220v,400/230v,415/240v	380/220v,400/230v,415/240v	380/220v,400/230v,415/240v	380/220v,400/230v,415/240v
Motor	Cummins NTA855G1A	Cummins NTA855G4	Cummins NTAA855G7A	Cummins KTA19G4
Alternator	Stamford HCI444D	Stamford HCI444D	Stamford HCI444D	Stamford HCI544D
Speed Control type	Electronically	Electronically	Electronically	Electronically
Phase	Three	Three	Three	Three
Fuel Tank Capacity(Silent Type)	500L	500L	500L	500L
Fuel Tank Capacity(Open Type)	450L	450L	450L	450L
System Voltage	24V	24V	24V	24V
Frequency	50HZ	50HZ	50HZ	50HZ
Engine coolant flow	5L/min	5L/min	5L/min	10.2L/min
Air intake flow	418L/sec	434L/sec	549L/sec	579L/sec
Exhaust air flow	1090L/sec	1225L/sec	1240L/sec	1604L/sec
Exhaust Temperature	499°C	541°C	473°C	557°C
<b>ENGINE</b>				
Maximum output(kw)	321KW(50HZ)	351KW(50HZ)	407KW(50HZ)	504KW(50HZ)
Number of Cylinders	6	6	6	6
Aspiration	Turbocharged & Charge Air Cooled	Turbocharged & Charge Air Cooled	Turbocharged & Charge Air Cooled	Turbocharged & Charge Air Cooled
Cycle	4	4	4	4
Fuel Type	Diesel	Diesel	Diesel	Diesel
Combustion Type	Direct Injection	Direct Injection	Direct Injection	Direct Injection
Cooling Type	Water cooled	Water cooled	Water cooled	Water cooled
Bore	125mm	125mm	140mm	159mm
Stroke	147mm	140mm	152mm	159mm
Displacement	14 L	152mm	14 L	18.9 L
Compression Ratio	15:1	14.0:1	14.0:1	13.9:1
Lubrication Capacity	36 liter	36 liter	36 liter	38 liter
Coolant Capacity	20.8 liter	20.8 liter	36 liter	30 liter
<b>ALTERNATOR</b>				
Insulation	Clase"H"	Clase"H"	Clase"H"	Clase"H"
Excitation Type	Self-excitation or PMG	Self-excitation or PMG	Self-excitation or PMG	Self-excitation or PMG
Protection class	IP23	IP23	IP23	IP23
<b>FUEL CONSUMPTION @1500/1800 RPM</b>				
Standby Power(2)(L/hr)	80.7/89.2	83	98	121/136
Prime Power(1)(L/hr)	71.4/80.5	75	89.2	107/122
75% Prime Power(1)(L/hr)	54.3/61.7	57	67.8	82/94
50% Prime Power(1)(L/hr)	38.2/44.0	39.9	47.5	57/65
<b>DIMENSION(Open/Silent)</b>				
Length (mm.)	3315/4810	2930/4480	3485/4810	3390/3390
Width (mm.)	1100/1350	1100/1130	1155/1500	1450/1355
Height (mm.)	1650/2260	1650/2270	1640/2260	2100/2260
<b>UNIT WEIGHT(Open/Silent)</b>				
Net Weight (KG)	3350/4020	3520/4300	3870/4870	4100/5330
<b>All of Unit /Certificates</b>				
Engine	ISO 3046,BS 5514,DIN 6271			
Alternator	UTE NFC 51-111-105-110 ICE34-1,BS 5000-4999 NEMA MG 21,VDE 0530			
Generator Set	ISO 8528			

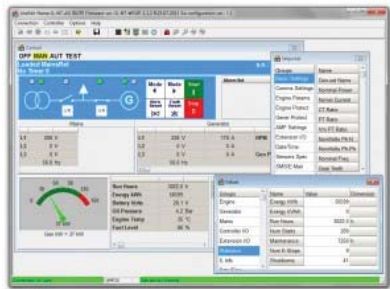
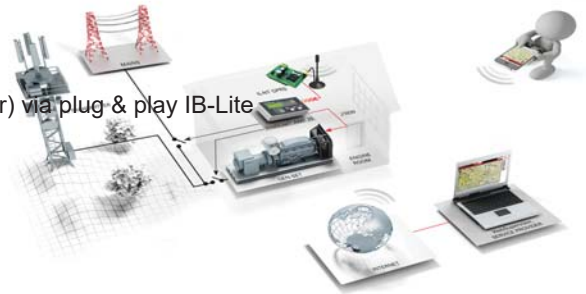
### Remark

- (1)Prime Power: ratings are as per DIN 6271,BS55114 and ISO-3046 with 10% overload capacity
- (2)Standby Power: Power available at variable load for up to a max. of 500 hours during one year of which 300 hours may be for continuous use.
- (3)Operation at Altitude ≤1500m, Ambient temperature ≤ 40°C.If altitude higher than 1500m, each 100m will cause additional de-rating 1%.
- (4)Equipment can be changed or upgraded without notice.



# IntelliLiteNT

- Auto Mains Failure (AMF) Gen-set Controller
- Compact gen-set controller for single genset operating in standby mode
- Meets all requirements for Auto Mains Failure (AMF) applications
- Full gen-set monitoring and protection
- Outstanding EFI engine support with diagnostic messages in plain text via J1939
- Detailed RTC event and performance log
- Multiple languages (user changeable) in controller, even more in installation suite
- Plug-in and CAN bus extension modules capability
- WebSupervisor, AirGate and LOCATE support\*
- Automatic SMS on alarm or event & gen-set control over SMS\*
- On-line control and monitoring over web pages (embedded web server) via plug & play IB-Lite
- Optional GSM/GPRS modem/wireless Internet via IL-NT GPRS
- Fuel theft protection and Total fuel consumption monitoring
- Earth fault current protection\*
- Alternative switchable configuration
- Dual mutual stand-by (Dual AMF) support
- Supports prime power (MRS) applications
- Automatic and manual GCB and MCB control
- Magnetic pickup input
- D+ preexcitation terminal
- True RMS measurement
- 3 phase power measurement of gen-set and mains incl. kWh
- 3 configurable analog inputs
- 7 binary inputs
- 7 binary outputs
- \* Plug-in module required
- Low temperature version is available for operation from -40°C to +70°C



## (Option) Standby system - remote monitoring via Internet



### Description:

- \* Stand-by gen-set with electronic engine. IntelliLite NT AMF 25 continuously monitors a mains supply and automatically starts an engine and switches load to a standby generator set in case of mains failure.
- \* The service provider can monitor the gen-set operation remotely via GPRS modem.
- \* The operator can use LiteEdit for a single gen-set view or WebSupervisor for total fleet management.
- \* The generator is protected by a built in over/under voltage and frequency protections as well as IDMT overcurrent protection.
- \* The controller communicates with engine management unit by a CAN J1939 bus. Engine values and alarms are visible on a graphical LCD screen in plain language - no need to learn cryptic flashing or numeric error codes.



**KEPBER TEKNIKA**  
www.kepber.com

Fujian Everstrong Lega Power Equipments Co., Ltd  
Address: Fuqing Hong Kuan Industry Zone, Fuzhou, Fujian Province, China  
Tel: +86-591-83859146 Fax: +86-591-83853130  
Web: www.legapower.com